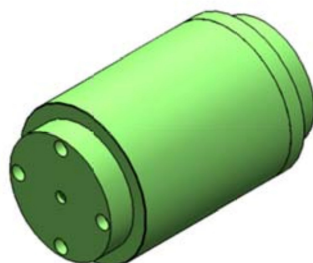


High Power Free Space Isolator, HPFSI



HPFSI

Description

The high power isolator series includes in-line type, beam expanded isolator, fiber in and free space out isolator and free space isolator etc. They're characterized with low insertion loss, high isolation, high power handling, high return loss, excellent environmental stability and reliability. They are ideal for fiber laser and instrumentation applications.

Feature

High isolation and low insertion loss
 PM and Non-PM are available
 Excellent environmental stability and reliability

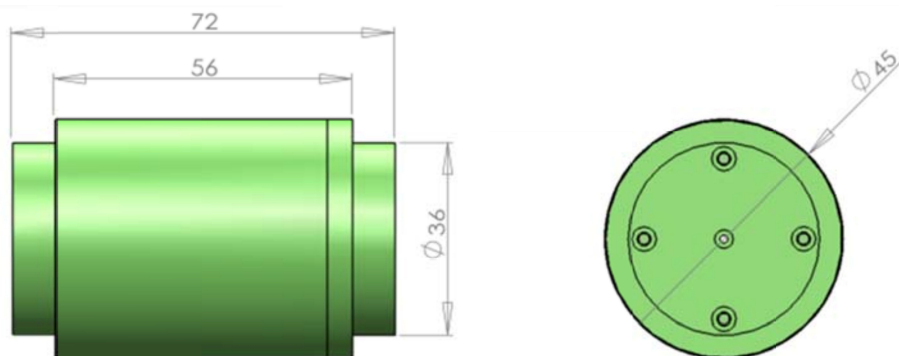
Application

Fiber Laser
 Fiber Sensor

Specification

Type Parameter		High power free space isolator, HPFSI
Operating wavelength(nm)		106
Peak isolation (dB)		35
Isolation in band at 23℃(dB)		≥
Insertion loss at 23 (dB)		≤0.5
Polarization dependent loss(dB)		≤0.1
Input/output beam diameter (mm)		≤0.60, other on demand
Power handling	Average (W)	2~30, higher on demand
	Puls peak(KW)	10~30, higher on demand
Dimensions (Φ*L mm)		Φ45

Package Dimensions



Ordering information

HPFSI-XX XX-X- X-XX*XX

- Package size: $\Phi 45 \times L72\text{mm}$
- Average power handling: 1=1W, 2=2W, 5=5W, 10=10W, 20=20W etc.
- Power condition: C=Continue wave, P(10)=Pulse peak power(10KW), etc.
- Operating wavelength: 1064nm etc.
- HPFSI: High power free space isolator